



Aeron® Chairs

Peak performance all day



BREAKTHROUGH DESIGN AND PERFORMANCE

Some designs defy imitation, and the Aeron chair is one of them. Bill Stumpf and Don Chadwick purposefully designed it to be like no other chair—replacing foam and fabric with Pellicle®, a breathable, form-fitting material that provides truly customized comfort and support. Extensive research shaped the original design. Continuing research ensures that Aeron remains the benchmark for performance in ergonomic seating. You won't find anything else like it, anywhere.



Adjustments at your fingertips



The comfort of Pellicle suspension

ADVANCED ERGONOMICS

The Kinemat® tilt allows the body to pivot naturally and simultaneously at the ankles, knees, and hips for smooth, proper support in a 30-degree tilt range. Because research shows that many people are sitting upright and forward, Aeron offers the PostureFit® option. It provides custom-fitted support at the lower back that promotes proper alignment of the spine for a healthful, comfortable posture.

VERSATILE LOOKS

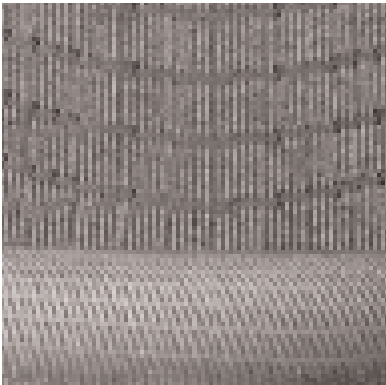
Extensive material and finish choices make Aeron a comfortable addition to nearly any interior. From the pinstripe look of Classic to the gentle swell of Waves to the geometric shape of Tuxedo, Pellicle patterns in neutral colors offer a variety of choices. Titanium, polished aluminum, and graphite finishes complement the full selection of Pellicle colors.

COMPATIBLE WORK STOOL

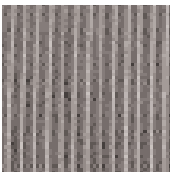
The Aeron work stool matches the comfort and performance of the work chair. Offered in two heights, it has the same ergonomic features and adjustments, including the Kinemat tilt and PostureFit option. In addition, people can adjust the height of the work stool's innovative Fine-Tune™ footring while seated. Available in all Pellicle and finish choices, work stools combine with work chairs to provide a consistent Aeron look throughout an environment.



Lower-back PostureFit support



Waves Pellicle



Classic Pellicle



Tuxedo Pellicle





Bill Stumpf



Don Chadwick

SIZED TO FIT

Bill Stumpf and Don Chadwick designed the Aeron chair in three sizes. The B size is the best fit for most people. The A size fits those who are smaller and lighter; the C size fits taller and heavier people. Anybody—from the 1st-percentile female to the 99th-percentile male—can find a perfect Aeron fit.

RESPONSIBLE DESIGN

Herman Miller builds the Aeron work chair responsibly, conscious of its environmental impact. Both the work chair and work stool are 94 percent recyclable.



Aeron work chair



Aeron side chair



Aeron work stool

12-YEAR, 3-SHIFT WARRANTY

Like all Herman Miller products, the Aeron chair is durable for long-term performance and value. As a statement of our confidence in its quality, the Aeron chair is covered by the Herman Miller Warranty—a straightforward promise that we stand behind that quality 100 percent. The 12-year, 3-shift warranty covers all standard elements and includes labor on all warranty work.

EASY OPTIONSSM CAPABILITY

Our versatile, flexible products give people real choices. If they need something extra, we can do that, too, from modifying existing products to developing new ones. For more information on our Easy Options capability, please visit www.HermanMiller.com/easyoptions.

For more information about our products and services or to see a list of dealers, please visit us at www.HermanMiller.com or call (800) 851 1196.

© 2007 Herman Miller, Inc., Zeeland, Michigan Printed in U.S.A. on recycled paper with soy-based inks. O.MS2320-32

® **Herman Miller**, Aeron, Kinemat, Pellicle, and PostureFit are among the registered trademarks of Herman Miller, Inc.

™ Fine-Tune is among the trademarks of Herman Miller, Inc.

SM Easy Options is among the service marks of Herman Miller, Inc.